

---

**Topic :** Using Cache-A With Mac OS10.7 ‘Lion’ and later

**Reference Release:** v3.4.4 (SMBUp v1.4.1)

**Date :** June 2014

---

**Summary:**

While Cache-A has always recommended using Apple File Protocol (afp/afs) when mounting MacOS systems, users on Lion and later MacOS versions find that they also create a variety of extended file attributes and potentially problematic hidden files that can cause large transfers to hang or even lose connection. When users encounter such problems, we recommend that they change to SMB (Windows File Sharing) as this often resolves such issues.

When Apple updated OSX to Lion (10.7) they introduced their own version of SMB, called smb. While it is faster because it uses the SMB2 protocol that Microsoft introduced a few years ago, it does not work with the stable CentOS6.2 Linux kernel used in Cache-A products (which is also still in use for most enterprise Linux deployments). Thus turning on SMB Sharing using the normal System Preferences Sharing pane on Mac computers no longer works.

A third party ‘donation-ware’ application called **SMBUp** is available to make SMB backwards compatible. This application may be downloaded from

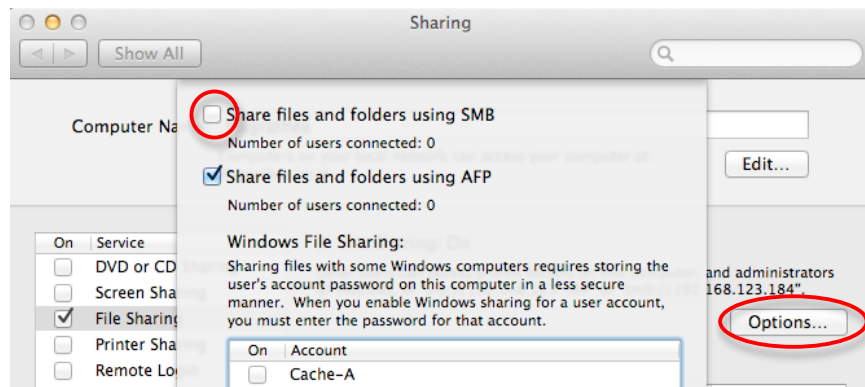
<http://eduo.info/SMBUp/api.php?get=getFile&q=SMBUp>

You can learn more about the issue and this application at <http://eduo.info/apps/smbup>

**SMBUp Installation and Setup Procedure:**

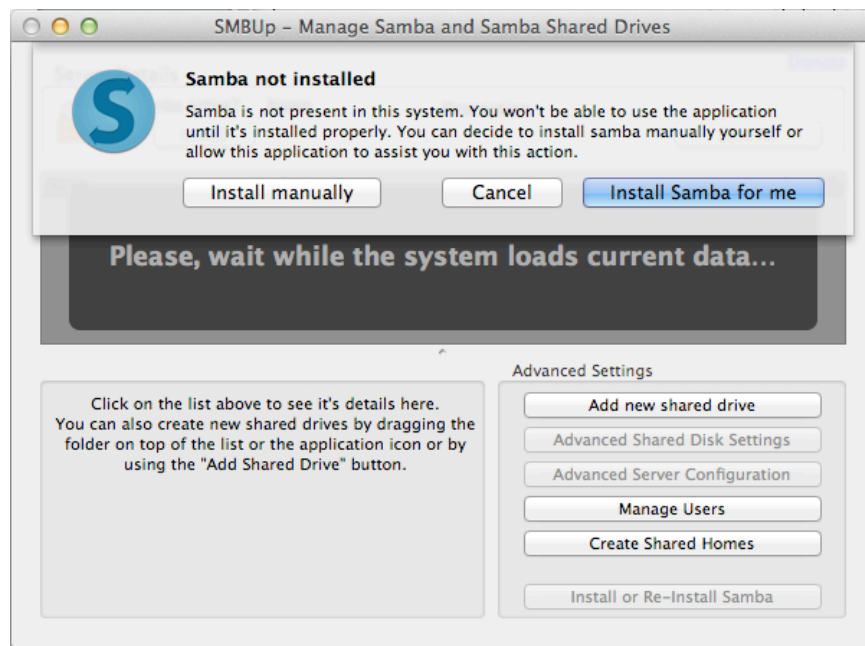
This procedure assumes that you have downloaded the file at the above URL.

1. Double-click the downloaded zip file and place the resulting application file into your applications folder or other desired location – Once it is running, you may also want to right click on the app in the dock and select “Keep In Dock” to keep it handy for the future.
2. Open the MacOS System Preferences and select the Sharing pane, then select the File Sharing line-item, Options button, and ensure that SMB sharing is turned off (this will prevent MacOSX’s new smb from interfering with what you are about to do). While you are there, also ensure that your Mac’s Computer Name at the top of this pane does not include any spaces or punctuation.



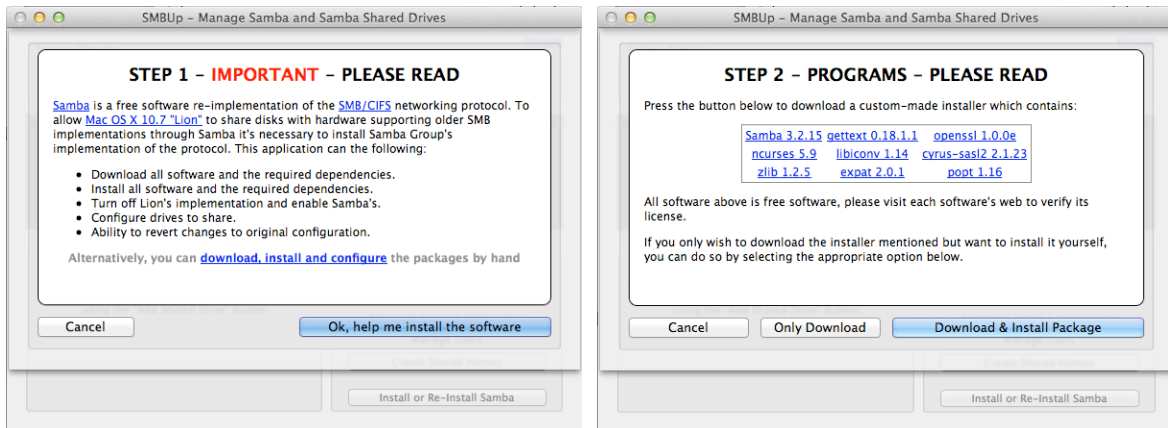
*Turn off SMB Sharing in your MacOS System Preferences*

3. Double click on the application itself to launch it. Dismiss or Donate at the donation screen; you will then get a “Samba not installed” notice as shown below. Click on the “Install Samba for me” button.

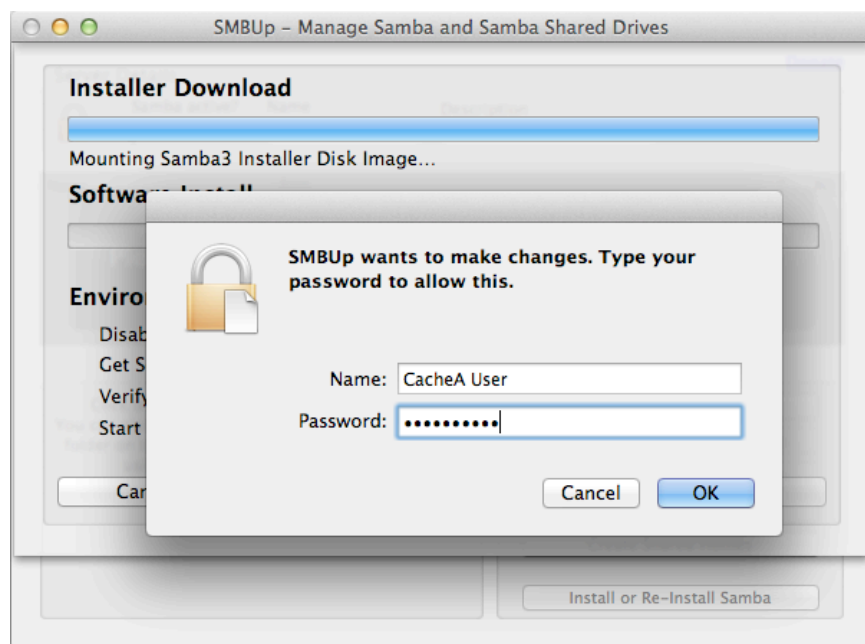


*Let SMBUp install Samba for you*

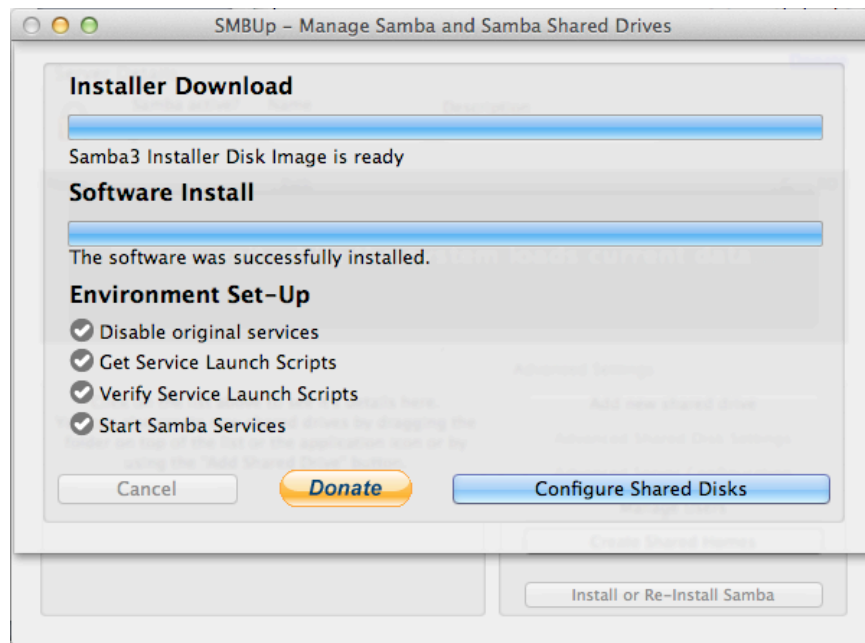
4. SMBUp will go through a number of steps to install Samba. Confirm the default action at each step and provide an administrator’s user name and password when prompted.



*Confirm each SMBUp step*

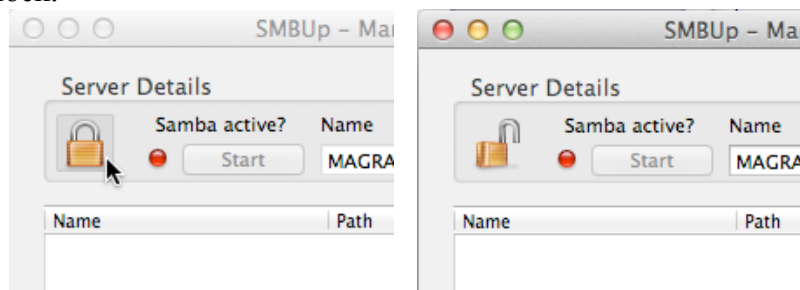


*Provide an Administrator's User Name and Password whenever prompted*



*Successful Installation Screen – Confirm Configure Shared Disks*

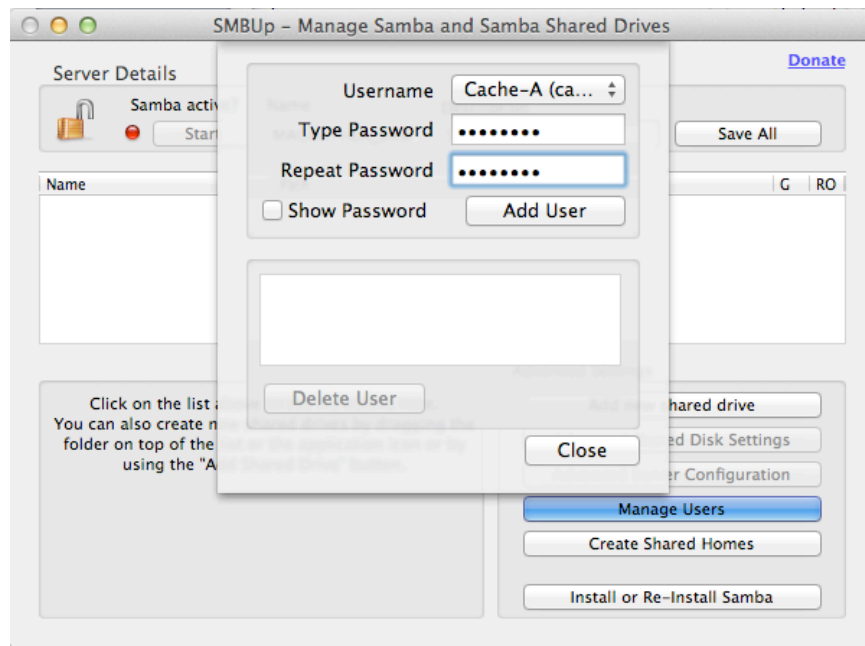
5. Confirm “Configure Shared Disks” in the last step as shown above, but do not yet attempt to configure your shares (you will need to first Authenticate again and also create a Samba user for the sharing as described in the following steps).
6. Authenticate your administrator credentials again by clicking on the lock at the upper left corner of the application window and confirm success by obtaining an open lock.



*Authenticate your admin privileges to the program again*

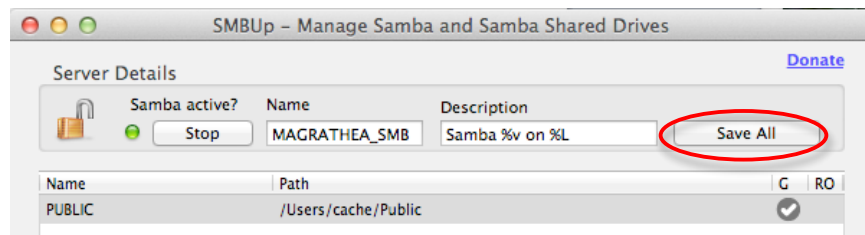
Note that unlocking this lock times-out and you may have to re-enable it several times as you progress through the rest of these actions.

7. Next create one or more Samba users by clicking on the “Manage Users” button in the lower right of the application window. You may add as many users as needed, selecting them from the Username dropdown and providing their password (twice) and then clicking on the “Add User” button. Ensure that you have added a user for each owner of shares you intend to mount on your Cache-A.



*Adding Users to enable Samba Sharing*

8. **Important:** Once you've added users, you must click on the "Save All" button in the upper right corner of the application window.

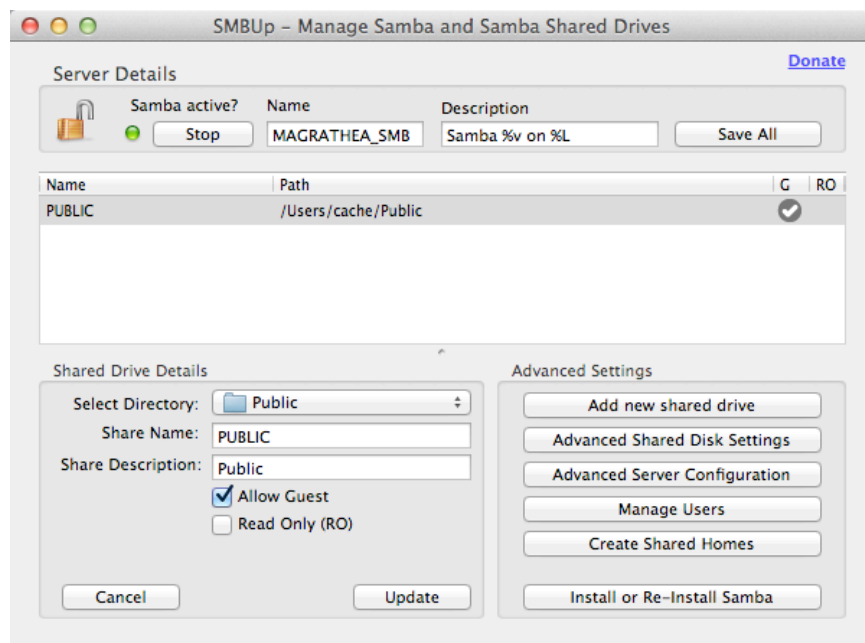


*Be sure to "Save All" at this point*

9. Next, add the shares you want to mount on your Cache-A by clicking on the "Add new shared drive" button. You will get a standard Mac "Choose File" dialog; simply navigate to your desired share location and select "Choose." Your selected folder(s) will appear in the list in the middle of the application window.

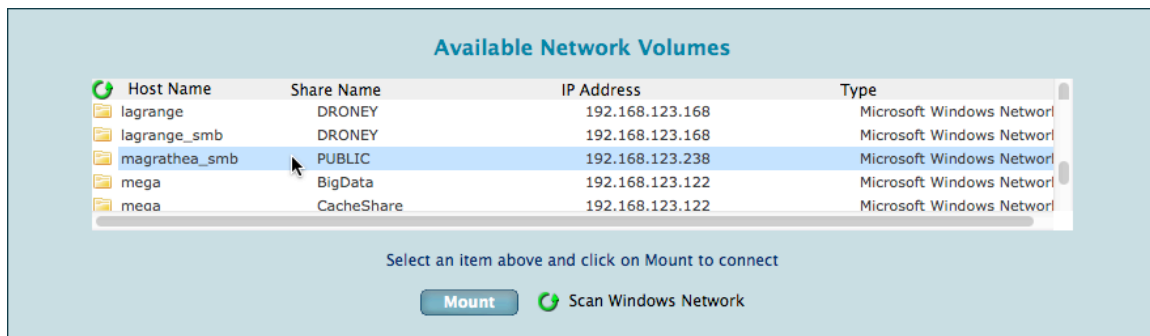
If you intend to restore from LTO Tape to these SMB shares, you must select each folder in the list and uncheck the "Read Only (RO)" checkbox. If you are concerned about security within your network, you may also want to uncheck the "Allow Guest" checkbox.

10. Your final step will be to click on the "Start" button under the "Samba active?" heading and get the green indicator as shown in the following screen:



*SMBUp fully configured and sharing a folder*

Once all of these steps have been completed, your shared folder(s) should appear in the Cache-A Mount Manager listing after clicking on the “Scan Windows Network” refresh arrow. Note that the Host Name will have a “\_smb” appended to your Mac’s normal host name.



*New Samba Share showing up in the Mount Manager Available Volumes list*

Once you have located your desired share as a Windows Network Volume, you can highlight it and select Mount and provide credentials as with any normal mount.

### Tips:

- At some points during the preceding steps, you may encounter grayed-out buttons instead of active ones – if this occurs, you may need to quit the SMBUp application and restart it.
- When you quit SMBUp, it will ask you if you want to save your changes and leave services running – obviously you should confirm that you do. The settings you so leave should remain in effect for the future until you either change them with SMBUp or update your Mac software.